

COMPETENT HUB

for engineers & contractors (Pty) Ltd

...Amped to serve you better!

OUR CONTACTS

Gaborone Branch — **Francistown Branch**

P O Box 669 AAH
Plot 14417 Gwest Industrial,
Office4 First Floor Eland House
Tel/Fax: (+267) 311 3547
Cell: (+267) 74085552 / 72691887

P O Box 2907
Francistown, Botswana
Plot No: 31204, Somerset West
Cell: (+267) 74085552
+267 72691887

info@competenthub.co.bw

www.competenthub.co.bw

COMPANY PROFILE



ELECTRICAL SERVICES

- Electrical Installation • Maintenance
- Earthing and Lightning Protection
- LV and HV Overhead Line Reticulation
- Traffic Lights Installations
- 11KV - 33KV Cable Jointing and Termination
- Solar System Installations
- Standby Generator installation & Servicing



SUPPLY SERVICES

- Office Equipment • Stationary • Electrical Equipment
- Medical Equipment • Food Commodities
- Consumables • Mining Equipment • Sporting Equipment

Cell: (+267) 74085552 / 72 691 887

about us

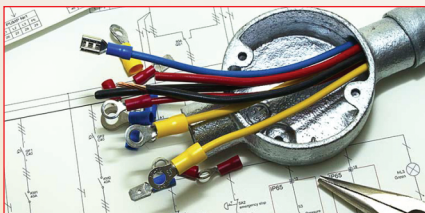
INTRODUCTION



Competent Hub for Engineers & Contractors is a 100% citizen owned company registered with the government of Botswana. We are also registered with PPADB, Burs and Licensed to do Supplies and electrical services.

Our business is built on reputation and reliability, whilst meeting and exceeding our clients' expectations. We as a company can reduce risk and improve compliance. Our expertise surely gives our customers a peace of mind.

With our employees having knowledge of regulations, great technical ability and experience of working in a wide range of industries, we can minimize your costs and fulfil your requirements.



OUR VISION

Our vision is to fully understand our customers' needs and exceed their expectations throughout the project life cycle. Our values will surely reflect who we are and what we do. They set the foundations for Success and help us deliver our vision to our clients.



OUR MISSION

Our mission is simply to be one of the Botswana's leading contracting company focused on customer satisfaction.

We seek to produce increased financial rewards and provide opportunities for growth and enrichment to employees, striving for honesty, reliability and integrity within the company.



OUR SERVICES

COMPETENT HUB takes pride in the professional quality of our work and high level of service we provide to our clients, ensuring that their needs are clearly understood, defined and met throughout the project. We are

committed to achieving and maintaining high standard of quality in all aspects of our business and to continually satisfy the expectations of our customers. We do the following services:

• ELECTRICAL INSTALLATION



• MAINTENANCE



• LV AND HV OVERHEAD LINE RETICULATION



• EARTHING AND LIGHTNING PROTECTION



• PRESSURE TESTING



• CABLING



• UPS and inverter installations



• FAULT FINDING



• INDUSTRIAL GENERATORS INSTALLATIONS



OUR SUCCESSFUL PROJECT

Ever since our inception, our company grew exponentially and the secret behind our success is nothing but good service as a result of experience from this work. We are well experience when it comes to electrical works, and today we are proud to present the following projects that we carried in the past 2 years.

	CLIENT NAME	PROJECT DESCRIPTION	CONTACT	LOCATION	COMPLETED	COMPLETION %
1	Bokone Reticulation & Electrical Systems (PTY)Ltd	2*240MM2x3Core; 11KV XLPE CABLE FROM SUB 2100 RO PROPOSED NEW SWITCHROOM AT BLOCK 9	A. Bannister 3959603	Block 9 Gaborone	30/07/2020	100
2.	Linear Investments (Pty Ltd	Makakung Village Electrification-Transformer dressing and commissioning	O. Chipso: 71711075	Makakung	28/01/2020	100
3	A.S.A Enterprises (Pty Ltd	Legothwana Village Electrification	C.Paradza: 3919195	Legothwana	18/10/2020	100
4	A.S.A Enterprises (Pty Ltd	BPC - DSW SMALL WORKS	C.Paradza: 3919195	Gaborone	18/03/ 2021	100
5	Linear Investments (Pty Ltd	KBL - Maintenance of LV DB's in CO2 Plant	O. Chipso: 71711075	KBL-Gaborone	15/03/ 2020	100
6	Protronic South Africa (Pty) Ltd	Supply and Installation of UPS DB at Botswana Public Service College	O. Kanthu T: 3160740	BPSC- Village at Gaborone	23/12/2020	100
7	Linear Investments (Pty Ltd	BPC DCCP- Small Works Projects	O. Chipso: 71711075	Gaborone Areas	14/02/2021	100
8	Lumbanisa pty Ltd (S.A)	Maintenance of Electrical installations in shops i.e. Hi-fi Corp and Incredible Connections Botswana	Ms Annelize +27826072320	Gaborone	20/02/ 2021	100
9	Linear Investments (Pty Ltd	ORAPA Cable Works Iso Tech Systems 11kV, 240mm x 3core XLPE Cable Terminations	O. Chipso: 71711075	Gaborone Areas	5/10/2021	100
10	Linear Investments (Pty Ltd	BPC DCCP- Small Works Projects	O. Chipso: 71711075	Gaborone Areas	10/12/2021	100
11	Clopas Investments (PTY) Ltd	Relocation of BPC Infrastructure-Cable Joints and Terminations - 11KV XLPE;3CoreCables-150-300	N.Seleka 3116657	Gaborone	20/12/2021	100

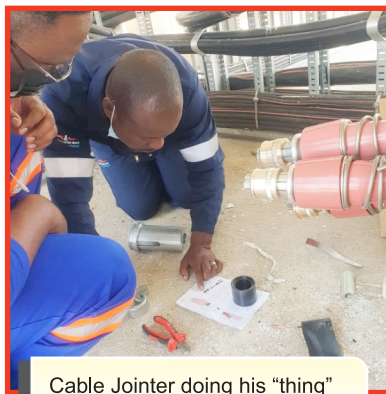
On Site Gallery



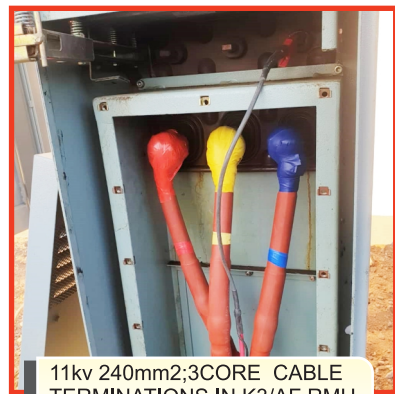
These photos were taken in some of our projects, they show 33 KV Overhead Line Construction, which were successfully completed.



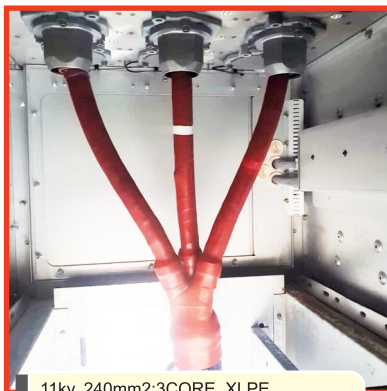
11KV RMU ,
SF6 CABLE TERMINATIONS



Cable Joiner doing his "thing"



11kv 240mm2;3CORE CABLE
TERMINATIONS IN K3/AF RMU



11kv, 240mm2;3CORE XLPE
CABLE TERMINATION BOTTOM ENTRY



XLPE CABLE TESTING
USING A VLF MACHINE



11KV SFS GAS INSULATED
RMU INSTALLED



11KV; 3CORE XLPE CABLE
UNDER TEST USING 10KV MEGGER



11KV PANEL LIGHTING ARRESTERS,
BOTTOM ENTRY



NEW SF6 RMU INSTALLATION
COMMISSIONING IN PROGRESS

On Site Gallery

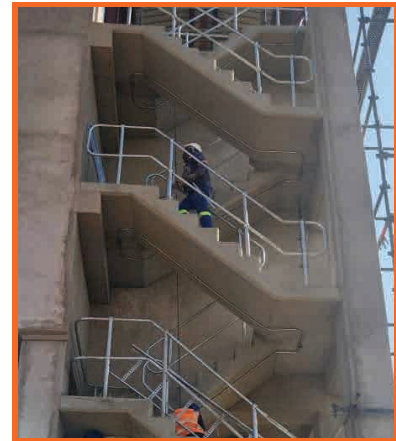
MMAMASHIA



Cable Racking at Filter Area in the Mmamashia Water Treatment Plant Works-



Cable Racking between Filters at Mmamashia Water Treatment Plant



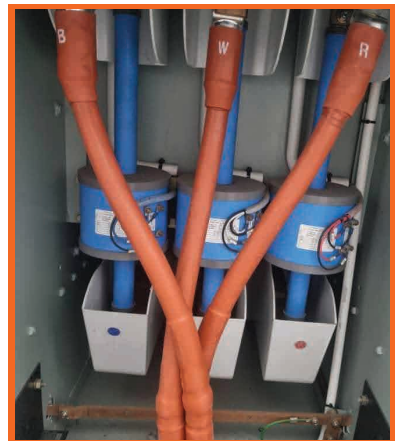
Electrical Installation of stair lights at the New Inlet Tower at Mmamashia Water Treatment Plant



Installation of LV Distribution Boards in Inlet Tower at Mmamashia Water Treatment Plant



Installation of 3.3kv Switchgear in New 11kv-3.3kv Substation at Mmamashia Water Treatment Plant



Installation of 11kv XLPE Cable Termination in new Switchgear at Mmamashia Water Treatment Plant



Installation of 11kv Switchgear in new Substation for the New Mmamashia Water Treatment Plant



Installation of New 400V LV Board in New Substation at Mmamashia Water Treatment Plant

Installation of LV Distribution Boards in Inlet Tower at Mmamashia Water Treatment Plant

On Site Gallery



Constructed Mochudi - Sikwane 33KV
OHL FEEDER , subcontracted by
Benmas electrical.

SIKWANE



Installation of 30Kva UPS for SADC Offices, at
Meteorological Services

VILLAGE



Installation and servicing of 60Kva 3Phase Generator at Tevo Offices in Gaborone

On Site Gallery



Supply and Install 11kV; 35mmx3core XLPE Cable Termination in RMU at Goodhope Council Offices



Supply and install 11kV; 35mmx3core XLPE Cable Termination in 11KV ; K3 Minisub at Goodhope Council



Trench preparations ; Supply and installation of 210m 11kV ; 35mm2;3C XLPE Cable in Goodhope



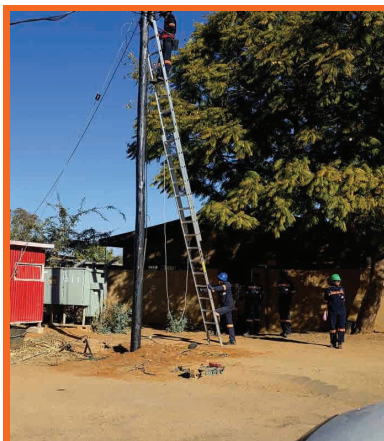
Transformer Oil Samples for testing . New oil was filled up in K3 Minisub at Goodhope Council



Maintenance and Servicing 11kV ; 315kV ; 3Ph ; K3 Minisub at Goodhope Council Offices

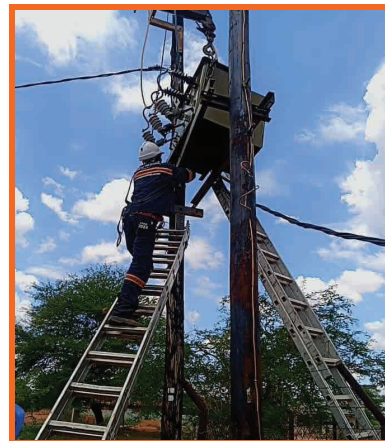


Combined Earthing results of Maintained 11kV ; 315kV ; 3Ph ; K3 Minisub at Goodhope Council Offices



Botswana Power Corporation Distribution Works- 9m Pole Replacements in Gaborone

On Site Gallery

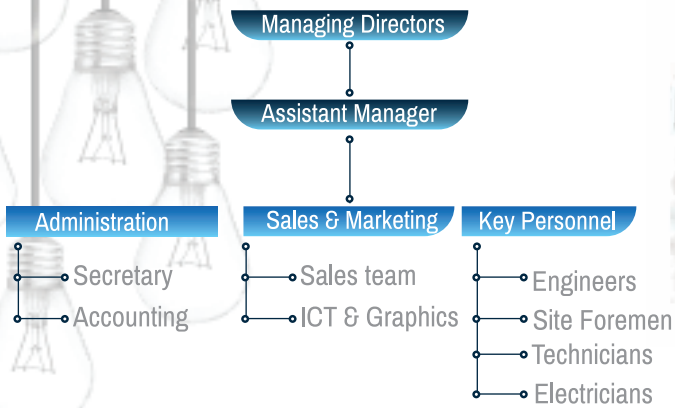


Bpc works 11KV 50KVA ;3PH Pole Mounted Transformers- Pole Replacements in Mochudi



CHEC (PTY) LTD TEAM ONSITE , carrying out Pole Replacements with full PPE in Gaborone

ORGANIZATIONAL STRUCTURE



MANAGING DIRECTORS'S PERSONAL PROFILE



Competent Hub of engineers & Contractors is under the leadership of Mr. Obert Dick who has a vast experience in electrical services.

Mr Dick has about 20 years experience in this field, and he has been involved in a lot of major Botswana Power Corporation(BPC) Projects.

He has also been part of some Mining projects and all these were successfully handed to the client being Debswana.

The following are some of the projects that Mr. Dick has participated in.

- Installation of 33KV overhead Line at Orapa Mine.
- Installation of 11 KV overhead line at Karowe Mine.
- Installation of Pole mounted transformers, mini subs and related switch gear for BPC.
- Distribution small works for BPC both in North and South regions.
- Installation of Solar Lights along Glen Valley - Phakalane road with Bothakga Burrow Botswana.
- Others projects are for individuals, industrial machines and generators.

HEALTH & SAFETY



It is the responsibility of **Competent Hub** to comply with the Health and Safety Policy and subsequent legislation, and provide and maintain a healthy and safe working environment.

We aim to minimise the number of health & safety and environmental incidents and ultimately to achieve an incident-free working environment.

We recognise and accept our duty to protect the health and safety of all visitors to the company, including sub-contractors and temporary workers, as well as any members of the public who might be affected by our operations.

Our health, safety and environmental policy will be continually monitored and updated to ensure continual improvement of the management systems.

The policy is updated at least every 12 months.

SAFETY OUR CONCERN

CONCLUSION

This Profile is simply compiled in order to share information about us. We have covered almost everything about our company and we sincerely hope that you have appreciated us. Please feel free to contact us for any information regarding our services.

OUR CONTACTS

Gaborone Branch — **Francistown Branch**

P O Box 669 AAH
Plot 14417 Gwest Industrial,
Office4 First Floor Eland House
Tel/Fax: (+267) 311 3547
Cell: (+267) 74085552 / 72691887

P O Box 2907
Francistown, Botswana
Plot No: 31204, Somerset West
Cell: (+267) 74085552
+267 72691887

Email: info@competenthub.co.bw